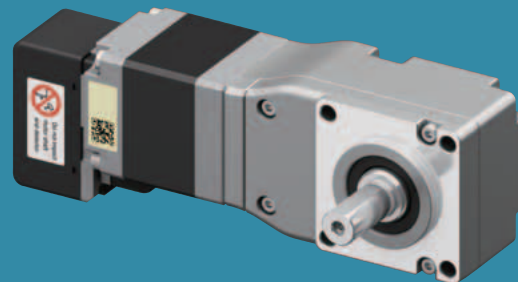


α STEP AZ Series

Right-Angle FC Geared Type
Frame Size 35 mm **NEW**

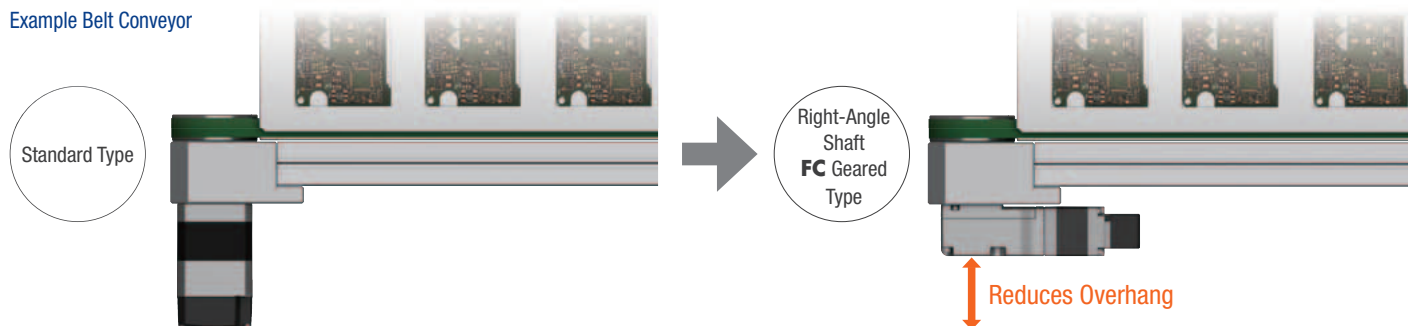


AZ Series Right-Angle FC Geared Type now includes a 35 mm Frame Size. Save space within equipment.

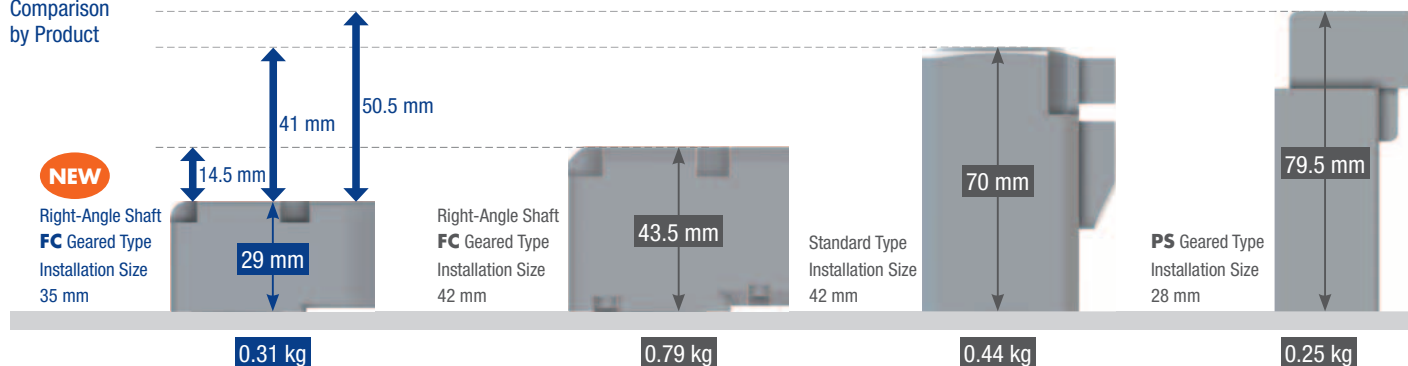
Compact & Space Saving

The right-angle FC geared type can reduce motor overhang.

Example Belt Conveyor

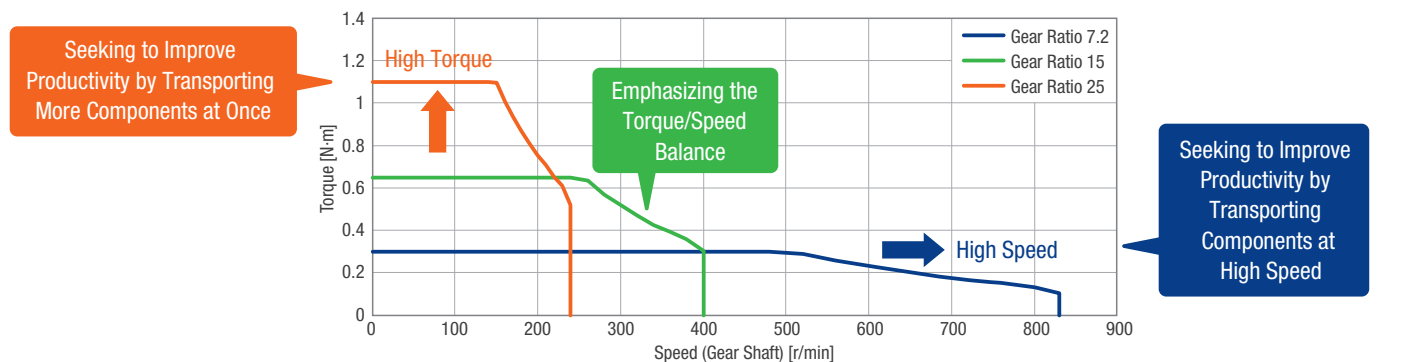


Comparison by Product



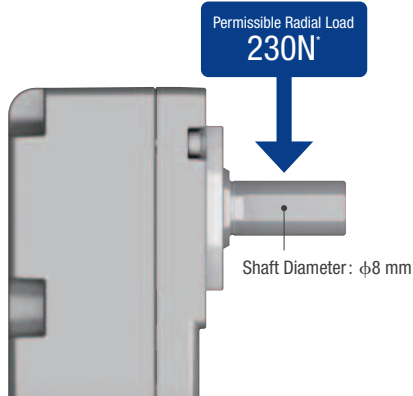
Supports a Wide Range of Torque Bands

Three types of gear ratios are available. Select based on the application needs/ requirements.



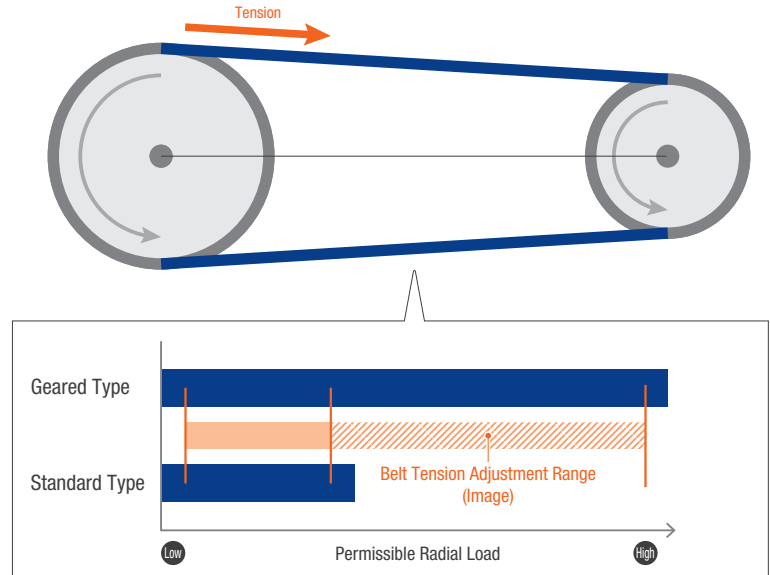
High Strength

By utilizing the characteristics of the geared type, high strength and an increased permissible radial load can be achieved. The belt and pulley mechanism allows for a high safety factor relative to the belt tension, which makes tension adjustments easier.



*Position distance from shaft end is 15 mm

Belt and Pulley Mechanism



High Safety Factor Relative to Belt Tension

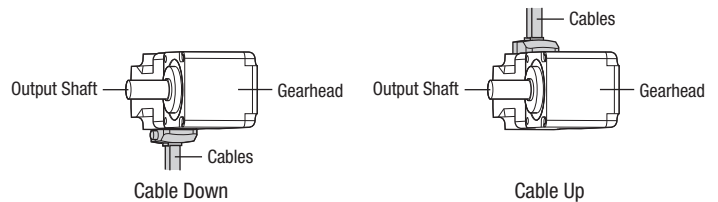
Product Number

AZM 2 4 A K - FC 7.2 U A

① ② ③ ④ ⑤ ⑥ ⑦ ⑧ ⑨

①	Motor Type	AZM: AZ Series Motor
②	Motor Frame Size	2: 35 mm
③	Motor Case Length	
④	Output Shaft Type	A: Single Shaft
⑤	Motor Type	K: DC Input Specification
⑥	Geared Type	FC: FC Geared Type
⑦	Gear Ratio	
⑧	Cable Outlet Direction*	D: Down U: Up
⑨	Identification	A: Solid Shaft

* The cable direction is as viewed from the gearhead with the output shaft facing left.



Product Line

Product Name

AZM24AK-FC7.2DA

AZM24AK-FC7.2UA

AZM24AK-FC15DA

AZM24AK-FC15UA

AZM24AK-FC25DA

AZM24AK-FC25UA

Recommended to connect to mini drivers and multi-axis drivers. Please see the website or individual catalog for details.



mini Driver



Multi-Axis Driver

Specifications



Motor Product Name	Single Shaft	AZM24AK-FC7.2 □ A	AZM24AK-FC15 □ A	AZM24AK-FC25 □ A
Driver Product Name		AZD-KD, AZD-KX, AZD-K, AZD-KEP, AZD-KED, AZD-KPN		
Max. Holding Torque	N·m	0.3	0.65	1.1
Rotor Inertia	J: kg·m ²	9.2×10 ⁻⁷		
Gear Ratio		7.2	15	25
Resolution	Resolution Setting: 1000 P/R	0.05°/Pulse	0.024°/Pulse	0.0144°/Pulse
Permissible Torque	N·m	0.3	0.65	1.1
Holding Torque at Motor Standstill	N·m	0.3	0.65	1.1
Permissible Speed Range	r/min	0~833	0~400	0~240
Backlash	arcmin	40 (0.67°)	30 (0.50°)	25 (0.42°)
Power Supply Input	Main Power Supply	Input Voltage	24 VDC ± 5%	
		Input Current	1.6	
	Control Power Supply ^{*1}	Input Voltage	24 VDC ± 5%	
		Input Current	0.15	

● Either **U** (Up) or **D** (Down) indicating the cable outlet direction is specified where the box □ is located in the product name.

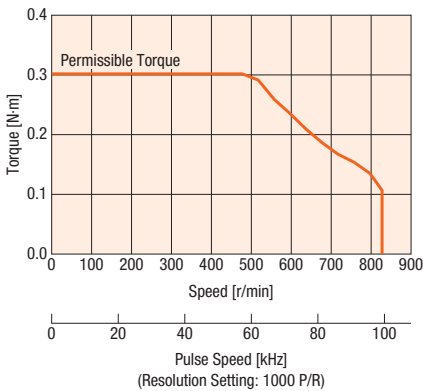
● A portion of the driver product names are listed. Can be combined with mini drivers and multi-axis drivers. Please see the website or individual catalog for details.

*1 Excluding **AZD-KD**, **AZD-KX** and **AZD-K**

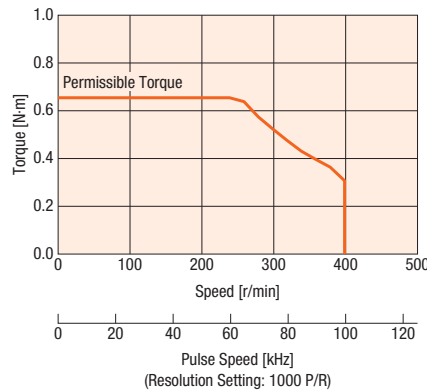
*2 Excluding the motor

Speed – Torque Characteristics (Reference Values)

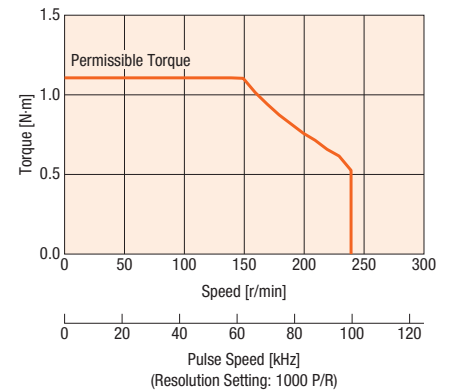
AZM24 Gear Ratio 7.2



AZM24 Gear Ratio 15



AZM24 Gear Ratio 25



Note

- Data for the speed – torque characteristics is based on Oriental Motor's internal measurement conditions. If the conditions are changed, the characteristics may also change as a result.
- Depending on the driving conditions, a considerable amount of heat may be generated by the motor. To protect the ABZO Sensor, be sure to keep the temperature of the motor case at 80°C or less.

Permissible Radial Load and Permissible Axial Load

Unit: N

Type	Motor Frame Size	Product Name	Gear Ratio	Permissible Radial Load					Permissible Axial Load
				Distance from Shaft End mm					
				0	5	10	15	20	
FC Geared Type	35 mm	AZM24	7.2, 15, 25	80	120	180	230	—	80

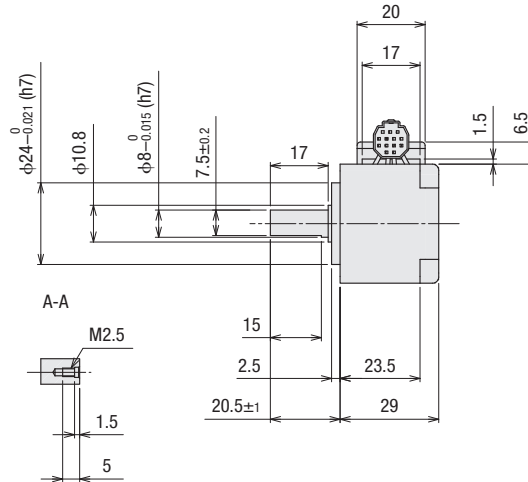
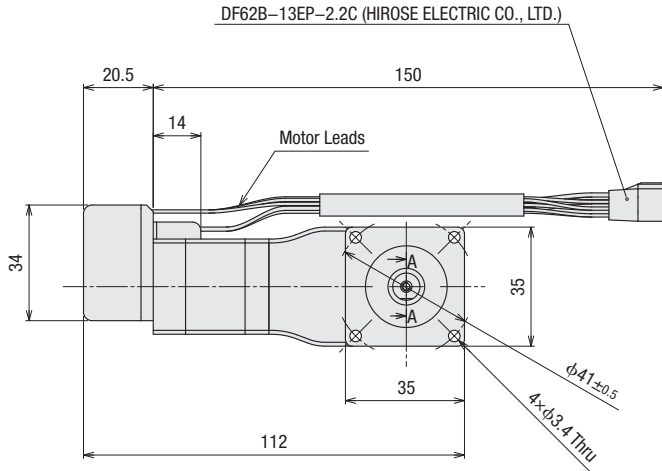
● The product names are listed such that the product names are distinguishable.

Dimensions (Unit = mm)

Frame Size 35 mm Cable Outlet Direction Up **2D & 3D CAD**

Product Name	Gear Ratio	Mass kg	2D CAD
AZM24AK-FC <input type="checkbox"/> UA	7.2, 15, 25	0.31	B1573

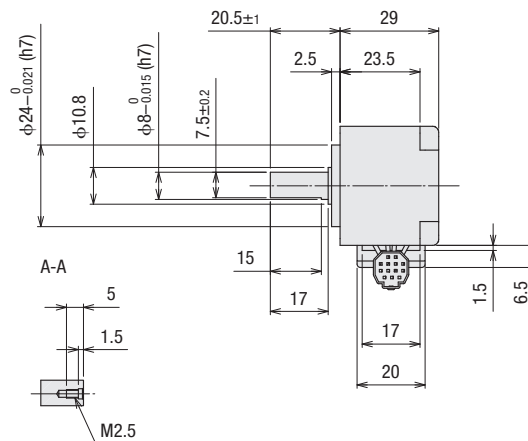
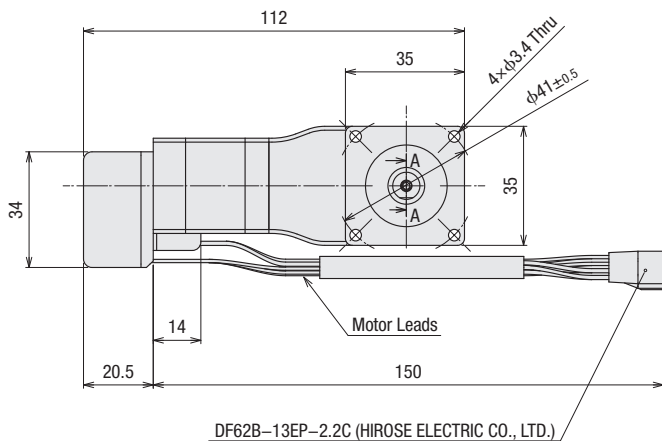
● A number indicating the gear ratio is specified where the box is located in the product name.



Frame Size 35 mm Cable Outlet Direction Down **2D & 3D CAD**

Product Name	Gear Ratio	Mass kg	2D CAD
AZM24AK-FC <input type="checkbox"/> DA	7.2, 15, 25	0.31	B1574

● A number indicating the gear ratio is specified where the box is located in the product name.



Visit www.orientalmotor.com

For further information (specifications, dimensions, speed-torque characteristics)